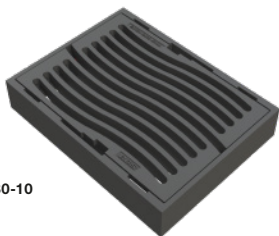


Figur 680



680-10

Strassenroste

Klasse D400

Nennweite 450x360 mm

Eigenschaften

Gussrost

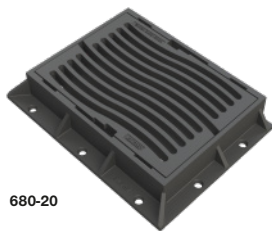
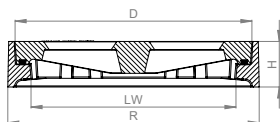
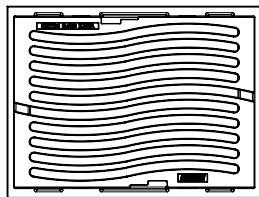
Dämpfende Einlage

Federklemmrost für Selbstarretierung

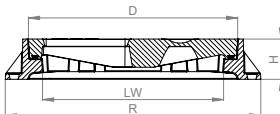
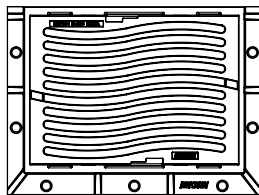
Gemäss VSS 40 366

Einbau

In Ortsbeton oder Betonrahmen



680-20



Abmessungen / Gewicht

Varianten		680-10	680-20
Rahmen	LW	450x360	450x360
	R	552x417	635x470
	H	100	100
Deckel	D	520x370	520x370
Einlauf	cm ²	830	830
Gewicht	kg	64	72